

CS55

Ceiling Speaker

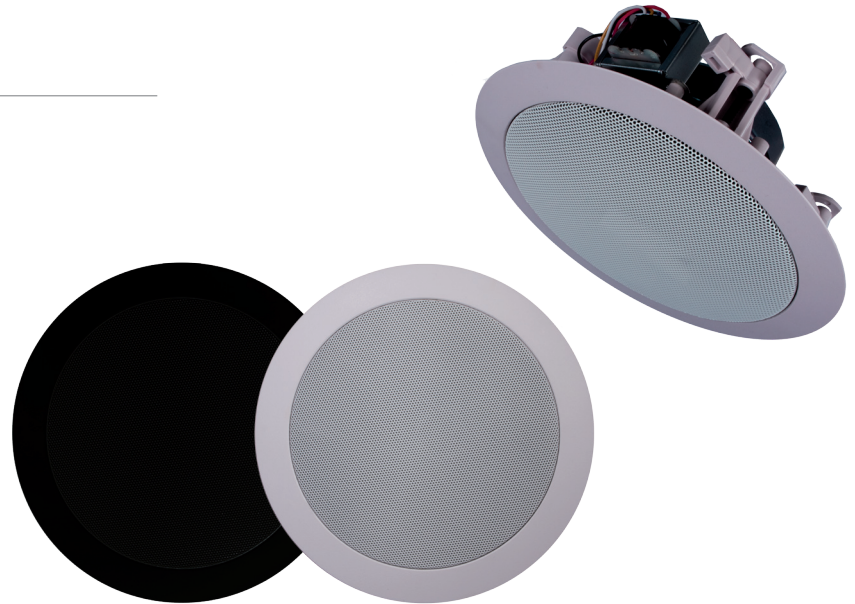
AUDAC

► Features

- Installation ceiling loudspeaker
- Very attractive design
- Detachable aluminium grill
- 3 different power tapings
- Very good speech reproduction
- Quick and simple mounting

► Applications

- Public buildings
- Business offices
- Warehouses
- Shops
- Hotels
- Restaurants



The CS series loudspeakers are AUDAC's ceiling speakers, designed for use any possible application.

Wherever sound is needed without obvious speakers, or in larger buildings where the sound has to be spread over an enormous space, the CS Series speakers will offer the best solution.

The use of high quality components, combined with the application of a standard 100V line transformer, makes the CS series a range of speakers that can be used in any situation. Even if it's a standard low impedance Hi-Fi installation or a larger 100V PA system.

The CS55 contains a single cone loudspeaker with a diameter of 125 mm, that will ensure a good speech reproduction.

The power can be set in 3 adjustable steps of impedance for 100V and 1 step for 8 Ohm standard low impedance applications.

- 6 Watt / 1600 Ohm @ 100V
- 3 Watt / 3300 Ohm @ 100V
- 1.5 Watt / 6600 Ohm @ 100V
- 10 Watt @ 8 Ohm

Below the detachable grill, there are four screws for a quick and simple attachment of the unit.

The removable grill and housing of the speaker can be painted, to blend in with the structure the speaker is built in. With these speakers comes an easy cut-out template to accomplish easy installation.

► Specifications

SYSTEM SPECIFICATIONS	
Max. power	20 W
RMS power	10 W
Power line transformer 1	6 W / 1600 Ohm
Power line transformer 2	3 W / 3300 Ohm
Power line transformer 3	1.5 W / 6600 Ohm
Frequency response -3dB	70 Hz - 14 kHz
Sound pressure W/1m	93 dB
Sound pressure max W / 1m	100.8 dB
Impedance	8 Ohm
PRODUCT FEATURES	
Dimensions (Width x Height x Depth)	Ø 205 x 70 mm
Weight net	780 g
Drivers	4 1/4"
Construction	ABS housing
Mounting	4 Screws clamps
Cut-out measurement	Ø 167 mm
Built-in depth	70 mm
Front finish	White aluminium grill
Colour	White (RAL 9010)
SHIPPING & ORDERING	
Packaging	Carton box
Shipping weight & volume	880 g - 0.0038 Cbm
Accessories	Foam inlay White Cut-out template

*AUDAC reserves the right to change specifications without notice: this is part of our policy to continually improve our products